



EMPOWERING PUBLIC HEALTH CARE

PORTABLE BLOOD ANALYSER

i-STAT[®] System

BE THERE. BE CONFIDENT.





HEALTHCARE CHALLENGES DEMAND INNOVATIVE SOLUTIONS

Indian Public Healthcare System is multi-layered with Public Health Centres (PHCs), Community Health Centres (CHCs) and Medical Colleges spread across different states in India.

There are several challenges faced by the Public Healthcare System:¹

- Overcrowded hospitals
- Shortfall of manpower including specialist doctors and paramedical staff
- Growing cases of chronic diseases such as diabetes and cardiovascular diseases
- Stagnant healthcare budgets
- Lack of infrastructure for diagnosis
- Delayed diagnosis and treatment

100
KMS

is what 46%
patients
travel to seek
medical care²

1 : 20,000

is the doctor
to patient
ratio in rural
areas³

39%

of PHCs are
currently
without a lab
technician⁴

Despite increased demand, healthcare goals remain the same:⁵

- Improve quality of care
- Reduce total cost
- Increase access

To meet these goals, healthcare must find innovative ways of improving efficiency, including:⁵

- Eliminating waste
- Optimising processes
- Driving appropriate resource utilisation

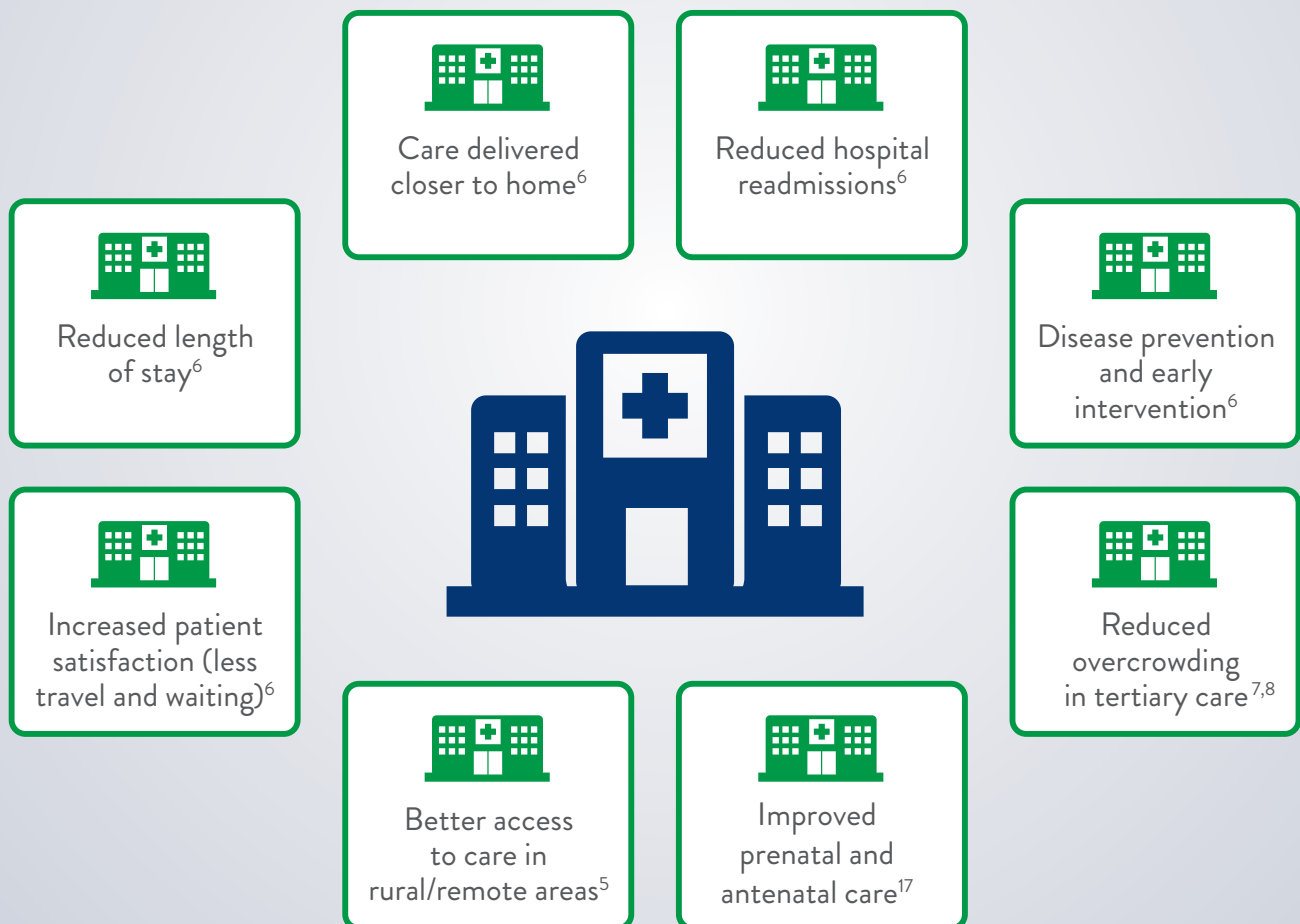
PUBLIC HEALTHCARE IS KEY TO THE FUTURE OF HEALTHCARE

To tackle challenges facing healthcare, there is a global trend of previously centralised hospital services moving to lower-cost peripheral settings in the community.⁶

Public Healthcare incorporates all care delivered away from central hospitals, including:

- Ambulance and tele medicine
- Care at remote or rural facilities
- Care at surgery centres
- Urgent care
- Long term care
- Care in nursing homes

Public Healthcare has a number of advantages that lead to lower costs:



LABORATORY TESTING IS CONSOLIDATING

As hospital care spreads into the community, laboratory equipment is moving to centralised hospitals to reduce costs.⁵

These combined trends make diagnostic services less accessible, and even in developed countries patients often wait hours or days for test results to return.^{8,9}



60-70%

of clinical decisions are dependent on laboratory tests, so the long wait for test results is a significant barrier to delivering efficient and effective care in peripheral locations.^{8,10}

Long waits for test results can delay clinical decision making and treatment initiation,¹¹ which can:

Impede quality and efficiency of care^{11,12}

Increase adverse outcomes^{11,12}

Increase workload of healthcare providers¹¹

Reduce patient throughput¹¹

Decrease patient satisfaction^{11,12}

Increase overcrowding¹²

Reduce number of successful discharges¹¹

POINT-OF-CARE TESTING MINIMISES WAITING TIME

Point-of-care (POC) testing allows diagnosis close to the patient, simplifying and streamlining the testing process in community care.

As a portable POC device, the *i-STAT System* delivers with-patient, lab-quality blood testing **within minutes**—letting physicians make decisions when and where they're needed.

By reducing the wait for results, implementation of *i-STAT* led to a 70 minute decrease in average length of stay in a busy Emergency Department.¹⁶

i-STAT works throughout the patient care continuum to help:



SHORTEN PATIENT
WAITING TIMES^{13,14}



ACCELERATE TIME
TO TREATMENT^{13,14}



FOSTER
COLLABORATIVE
PATIENT-CENTRED
CARE¹⁴



HELPS TO
INCREASE PATIENT
SATISFACTION



REDUCE UTILISATION
OF HOSPITAL
RESOURCES¹⁵



INCREASE FAMILY
INVOLVEMENT AND
CONFIDENCE

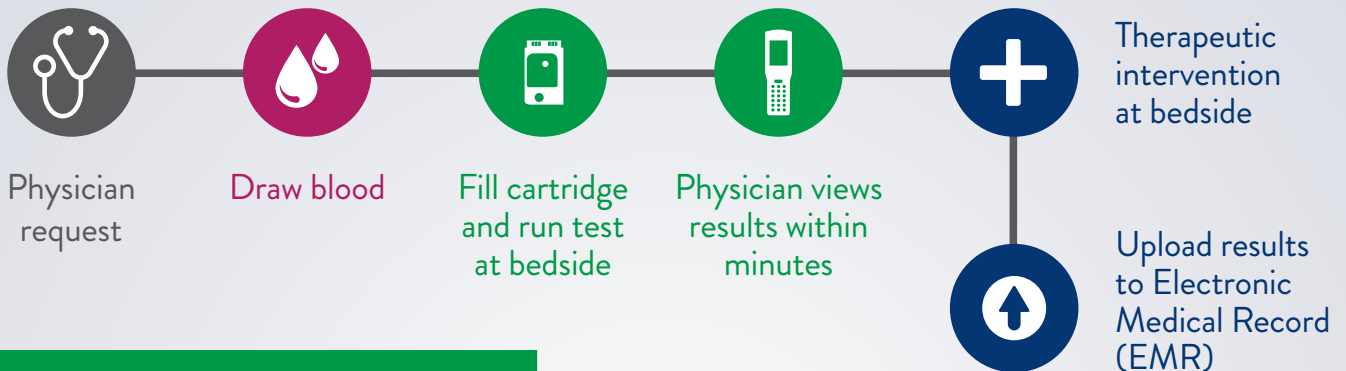
i-STAT's portability is crucial to its success, ensuring that it:

- Can be carried to the patient's bedside
- Can be used as a handheld device
- Can be stored in different locations
- Can be easily transported off-site
- Can be used away from an electrical supply once charged
- Requires no dedicated infrastructure

i-STAT: ARE YOU READY TO IMPROVE YOUR DIAGNOSTIC TAT#?

With-patient testing using the i-STAT System ensures a streamlined testing process, significantly reducing the wait for results.⁸

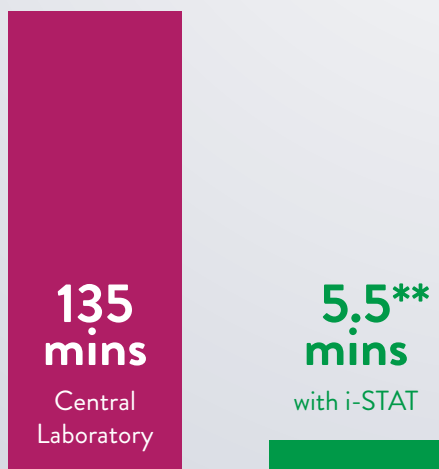
STREAMLINED TESTING WITH i-STAT



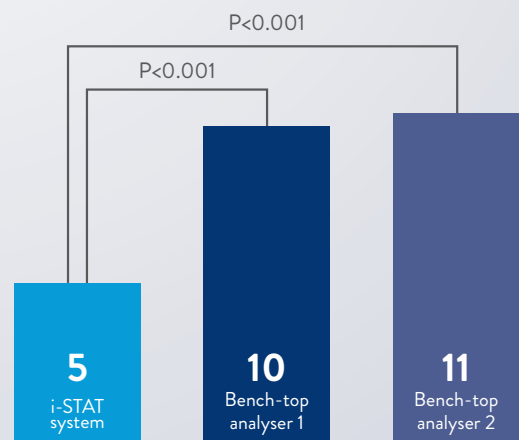
i-STAT can reduce assessment protocol steps by as much as 62%*

Results from two large UK hospitals showed the i-STAT System to be significantly quicker than two separate bench-top analysers as well as the central laboratory.^{18,19}

GET RESULTS UPTO 24.5 TIMES FASTER WITH i-STAT



MEDIAN TIME FROM BLOOD DRAW TO RESULTS WITH BENCH-TOP ANALYSER (MINUTES)



Turn Around Time

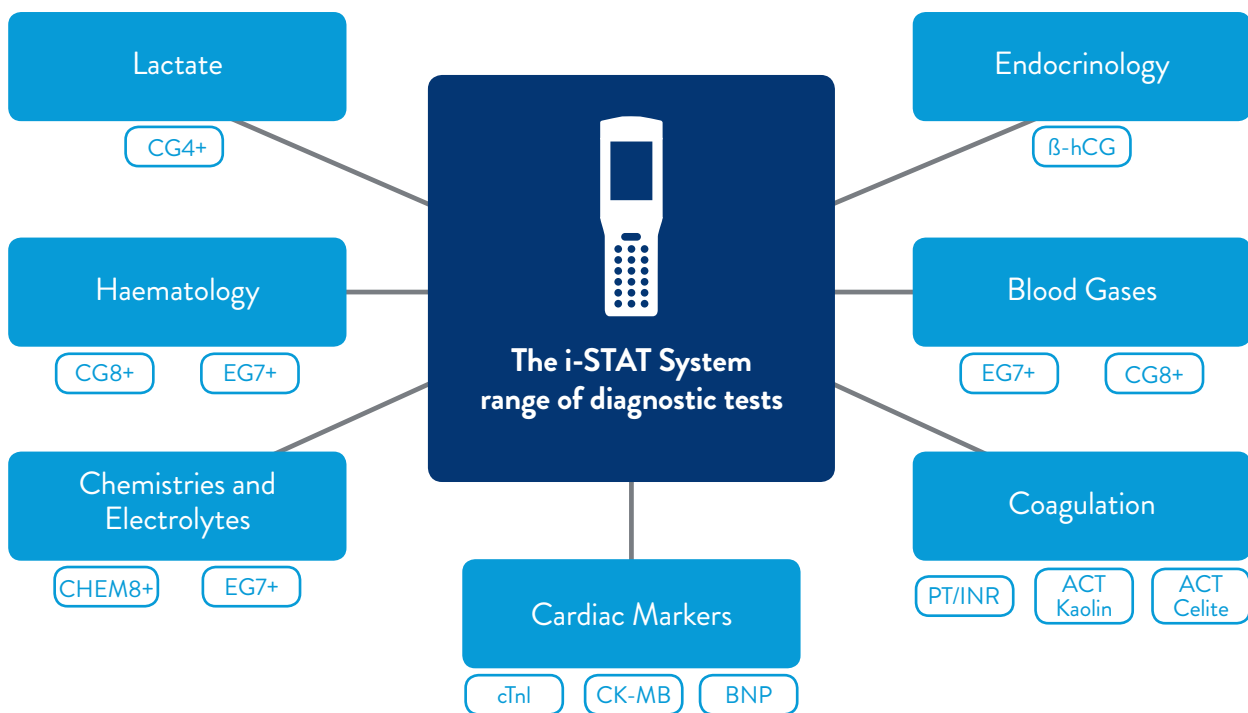
* The information presented here is based on an actual facility, but the institution has requested anonymity in this promotional material. The results described here are specific to one healthcare facility and may differ from those achieved by other institutions.

** Comparison study was conducted with the CG4+ cartridge



i-STAT OFFERS TRULY VERSATILE DIAGNOSTICS

The *i-STAT System* provides the most comprehensive menu of tests on a single platform for with-patient testing, meeting multiple patient needs with one portable device.



i-STAT. WHY WAIT?

- Delivers with-patient, lab-quality blood testing within minutes
- Simple to use, with a comprehensive range of tests
- Significantly cuts the wait for results and clinical decisions
- Unmatched quality, with no downtime

References

1. The Challenges Confronting Public Hospitals in India, Their Origins, and Possible Solutions. Available at <https://www.hindawi.com/journals/aph/2014/898502/>
2. Source: Technopak & Philips (2010) Accessible Healthcare: Joining the Dots Now, New Delhi.
3. The change in Indian medical device industry. Available at <http://www.pharmabiz.com/NewsDetails.aspx?aid=77944&sid=9>
4. The Shameful Frailty of the Rural Healthcare System in India. Available at <https://futurechallenges.org/local/the-frailty-of-rural-healthcare-system-in-india/>
5. Abbott Point of Care. Data on file.
6. Royal College of Nursing Policy and International Department. Moving care to the community: an international perspective. 2014.
7. Webb M and Campbell K. Innovating care in the community. British Journal of Healthcare Management. 2014;20(7):330–332.
8. McCallum S et al. Making a difference with a dedicated team. APOC.
9. Nova Scotia Health Authority. Blood transfusion, clinical chemistry and hematology turn around times. Available at: <http://www.cdha.nshealth.ca/system/files/sites/116/documents/blood-transfusion-clinical-chemistry-hematology.pdf> [Accessed September 2016].
10. Solnica B et al. Laboratory medicine as a profession and clinical science – how to perform both of them well? J Int Fed Clin Chem Lab Med. 2010.
11. Larsson A et al. The state of point-of-care testing: a european perspective. Upsala Journal of Medical Sciences. 2015;120(1):1-10.
12. Rooney D and Schilling M. Point-of-care testing in the overcrowded emergency department – can it make a difference? Critical Care. 2014;18: 692.
13. Jarvis PRE et al. Br J Hospit Med 2014;75:397-400.
14. Abbott Point of Care. Point-of-care testing reduces ED assessment steps and improves patient throughput. 040158 Rev A. 09/15.
15. Abbott Point of Care. Bedside point-of-care testing: Helping advance patient care at a busy New York CVICU. CVICU Snapshot 030755 Rev A 01/13.
16. Abbott Point of Care. Process optimisation in the emergency department: Clinical and economic effects of the i-STAT POCT solution. 045755 Rev A. 03/16.
17. Source: <https://data.unicef.org/country/ind/>

CHOOSE TRANSFORMATION™

For intended use and more details, please visit : www.abbottpointofcare.com
OR write to us : apocmarketing.india@abbott.com

FOR IN VITRO DIAGNOSTIC USE ONLY

i-STAT is a registered trademark of the Abbott Group of Companies in various jurisdictions.
047344 Rev A 11/16
© Abbott Point of Care Inc. All rights reserved.

